

CREATING BENCHMARKS IN FINER COUNTS COMBED COMPACT PROCESS

Pongalur Pioneer Textiles Success Powered by LMW's Smart Technology

Pushing Boundaries & Spinning Success: A Legacy of Innovation Powered by LMW

Through a steadfast commitment to modernization and innovation, and by leveraging LMW's machinery, Pongalur Pioneer Textiles has embraced advanced automation and digitalization. These advancements, made possible with LMW's Smart technology, have enabled the company to significantly enhance productivity, quality and produce yarns with superior strength. This dedication to quality, coupled with LMW's superior equipment, has solidified Pongalur Pioneer Textiles' position in both the domestic and international textile markets, catering to the growing global demand for high-quality yarns.



**Mr. S Aravind, Managing Director,
Pongalur Pioneer Textiles**

Founded in 1992 by Shri V Selvapathy, Pongalur Pioneer Textiles began as a modest mill with 2,800 spindles. Over the years, under the visionary leadership of Mr. Selvapathy and Mr. S Aravind, Managing Director, the company has transformed into one of the most modern and technologically advanced textile mills in South India. Today, with a spindle capacity of 1,20,000, Pongalur Pioneer Textiles specializes in producing premium combed compact yarns.

“

Mr. S Aravind, Managing Director

We are witnessing tremendous gain with the latest LMW smart machines setup, Pongalur Pioneer Textiles Pvt Ltd has achieved success in the production of fine combed yarns. Credits to LMW 's superior quality of machines and the continuous support in quality checks. The company has seen substantial improvements in production metrics, leading to increased customer satisfaction and market demand.

”

Strategic Collaboration with LMW: A Path to Excellence

Pongalur Pioneer Textiles has maintained a close and successful collaboration with LMW, a partnership that has been instrumental in the company's modernization efforts. LMW's machinery has enabled Pongalur Pioneer Textiles to optimize production efficiency, improve yarn quality, and achieve consistent output.

“

Mr. S Aravind

“The availability of engineers and spare parts locally, combined with LMW's prompt service support, has provided Pongalur Pioneer Textiles with a competitive advantage in terms of cost efficiency and operational continuity.”

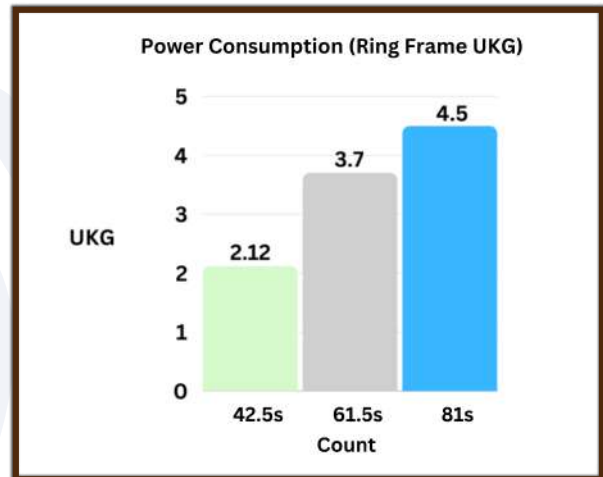
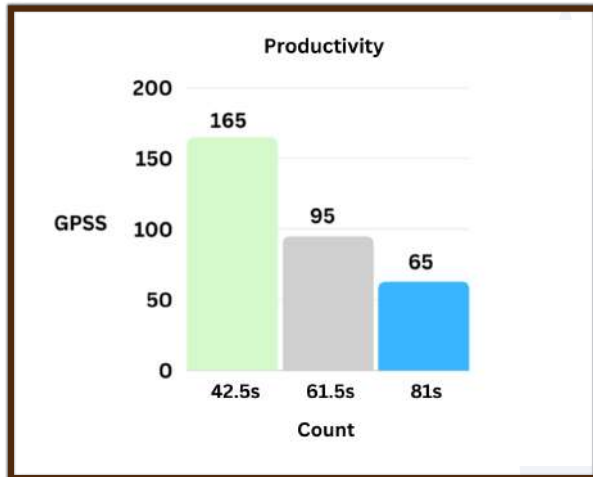
”



A Benchmark in fine count processing with LMW's Cutting-Edge Solutions

Pongalur Pioneer Textiles is equipped with LMW's LRJ 9/SXL Smart Ring Frame featuring the SPINACT Suction Compact System, which consistently delivers superior performance. This advanced technology from LMW has enabled the company to reach benchmark levels in both productivity and quality, ensuring optimal efficiency in their operations. The innovative design and cutting-edge features of LMW's machinery are instrumental in achieving these high-performance standards.

They produce high-quality yarn with impressive productivity metrics. The units achieve excellent results, with 40s at 165 GPSS, 60s at 95 GPSS and 80s count at 65 GPSS. Leveraging LMW's advanced technology, they have achieved very high production, setting a new benchmark in the textile industry.



Diverse Applications and Exports by LMW's versatile technology

Pongalur Pioneer Textiles, exclusively focused on producing 100% cotton yarn, operates with LMW's advanced machinery to manufacture Ne 40s to Ne 105s combed compact yarns. Leveraging LMW's state-of-the-art technology, Pongalur Pioneer delivers superior yarn quality that caters to manufacturers specializing in linen, shirts, and sarees. This versatility, powered by LMW's reliable and high-performance machines, ensures that Pongalur Pioneer continues to be a vital player in the textile industry.



“ The technical team says,
 LMW has been phenomenal in achieving superior production quality. Their machinery has allowed us to optimize every phase of the spinning process, ensuring maximum efficiency with minimal downtime. We’ve been able to maintain a consistent output of high-quality yarn.
”

Rapid Expansion and Operational Efficiency

Pongalur Pioneer Textiles currently operates with a spindle capacity of 1,20,000, with an additional 33,000 spindles in the pipeline for expansion. This planned expansion aligns with the company’s market demand and will significantly boost production capacity for cotton yarn. The expansion, fueled by LMW's High-Performance Technology, will allow Pongalur Pioneer to meet the rising customer demand for high-quality cotton yarn. This growth will further strengthen Pongalur Pioneer Textiles in the cotton yarn segment, enhancing both its domestic and international reach.

Pongalur Pioneer Group		
Department	Model	Quantity
LMW Blowroom	LA23/S	1
LMW Card	LC300A V3	16
LMW Draw Frame	LDB3 S	3
	LDF3 2S	1
LMW Lap former	LH 15	1
	LH 10	2
LMW Comber	LK64 / LK64 Z	8
	LK54 / LK54 Z	6
LMW Speed frame	LF 4280/SX	2
	LF 1400-A	9
LMW Ring frame	LR 60/A	32
	LRJ 9/SX	11
	LRJ 9/AXL	14
	LRG 5/1	10
	LR 6/S	2



Commitment to Sustainability and Energy Efficiency

Pongalur Pioneer Textiles is committed to sustainability and energy efficiency, integrating green energy solutions into its operations. The company uses 15 MW of green energy, with 12 MW sourced from solar energy and 3 MW from wind energy. This approach not only reduces operational costs but also aligns with their dedication to sustainable practices. With green energy sources, Pongalur Pioneer is taking significant steps toward minimizing its environmental footprint while maintaining high standards of productivity and efficiency.

LWW[®]